

CaseStudy



www.gis-solutions.com

Chicago Department of Water Management Atlas Map Conversion Project

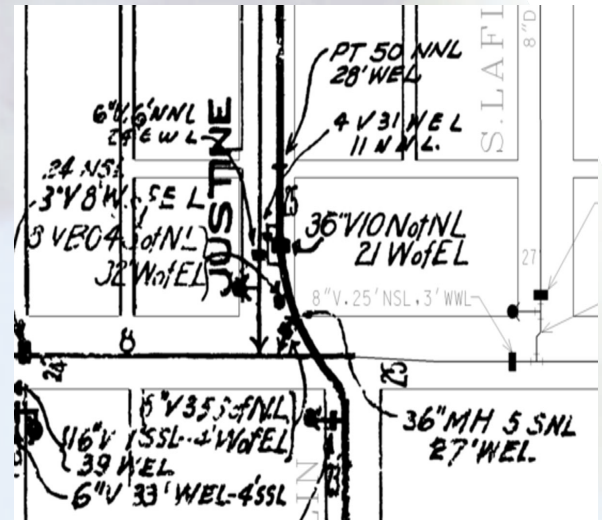
In January 2007, GIS Solutions and partners were selected by the City of Chicago Department of Water Management to complete a 5.3 million dollar data conversion project.

The City of Chicago Department of Water Management (CDWM) manages the Chicago water distribution system. To facilitate better planning and management of this system, CDWM has determined that a GIS database and set of applications is necessary. The complete City of Chicago water system consists of approximately 4,200 miles of water main, 50,000 fire hydrants, and 50,000 valves within the 231 square mile area of the City limits. The GIS development consisted of the following four major tasks:

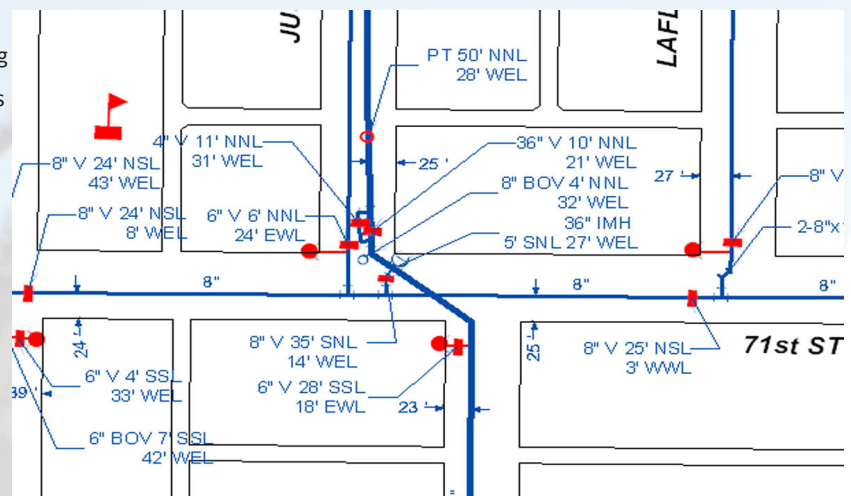
- Project Planning, Management, and Coordination
- Water Distribution Data Conversion
- Quality Assurance and Quality Control
- Digital and Hard Copy Data delivery and integration with current data

The Chicago Department of Water Management selected GIS Solutions to expand the GIS development program to include the complete City of Chicago water system. The data conversion consisted of populating the current GIS database with water distribution data from various sources. A requirement of the project was for the GIS system to contain current and accurate water distribution system data converted from data sources identified by CDWM.

The goal of this project was to establish a complete, functional GIS system for the citywide water distribution system, accessible by all necessary City personnel, within two years. The project was completed on schedule and under budget in January 2009.



CAD Drawing Pre-Conversion



CAD Drawing Post-Conversion

Corporate Headquarters

GIS Solutions, Inc. · 2612 Farragut Drive, 2nd Floor · Springfield, Illinois 62704 · TEL: 217. 546 . 3635 · FAX: 217. 546 . 3839 · info@gis-solutions.com

Chicago Office

GIS Solutions, Inc. · 1 E Wacker Drive, Suite 205 · Chicago, Illinois 60601 · TEL: 312. 464 . 0391 · FAX: 312. 464 . 0590 · info@gis-solutions.com